

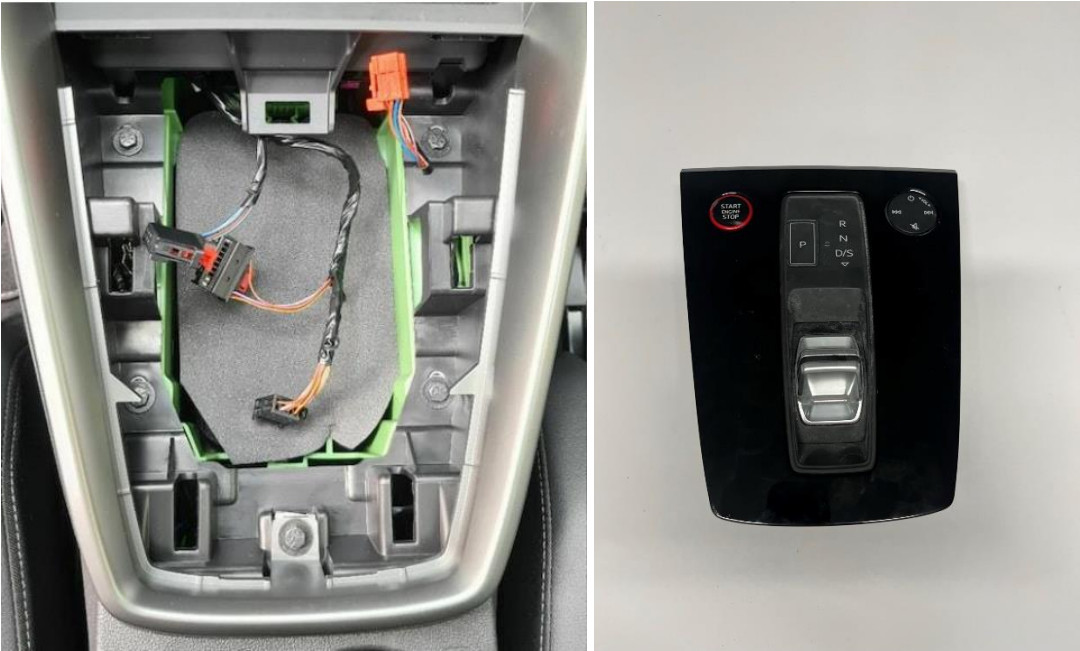
A3/S3/RS3 8Y Installation Fullcarbon Center Console

You must follow our instructions. Every Console has been preassembled and checked upon by us.

1. The console has a small cutout in the top area. Insert a pry tool and pull the part out towards the top.



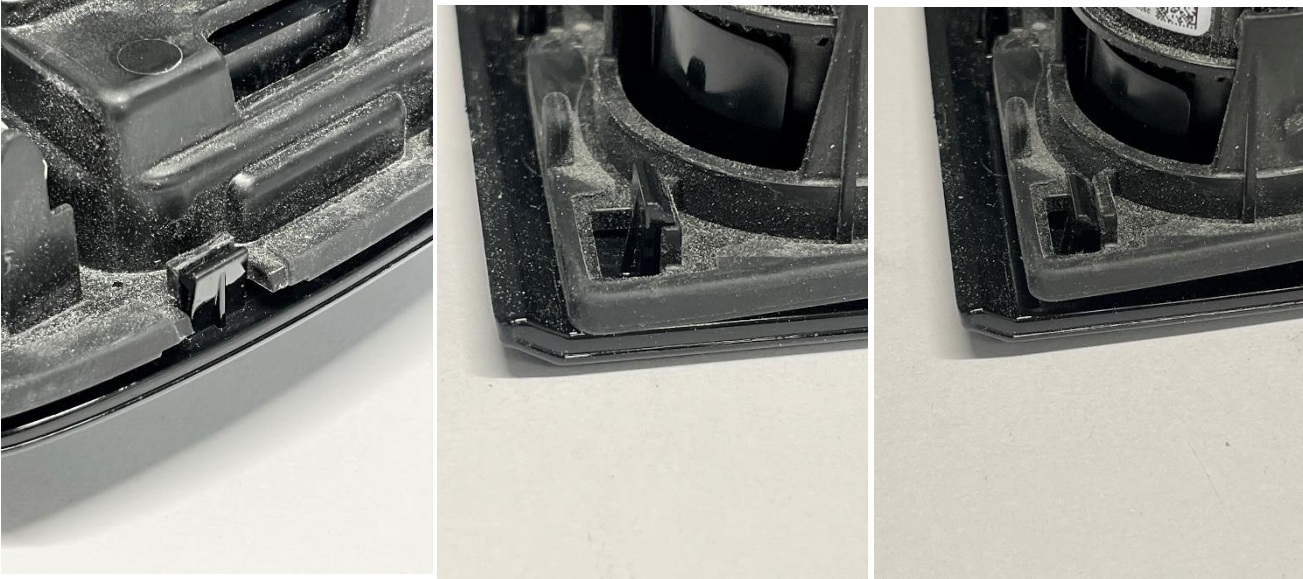
2. Remove the 3 connectors on the back and remove the part from the car..



3. Unscrew the 4 torx screws as shown.



4. Separation of front and back half. Start off in the lower area and work your way up. As soon as the lower and middle clips are released, you are able to pull the back half towards the bottom of the part and then up.



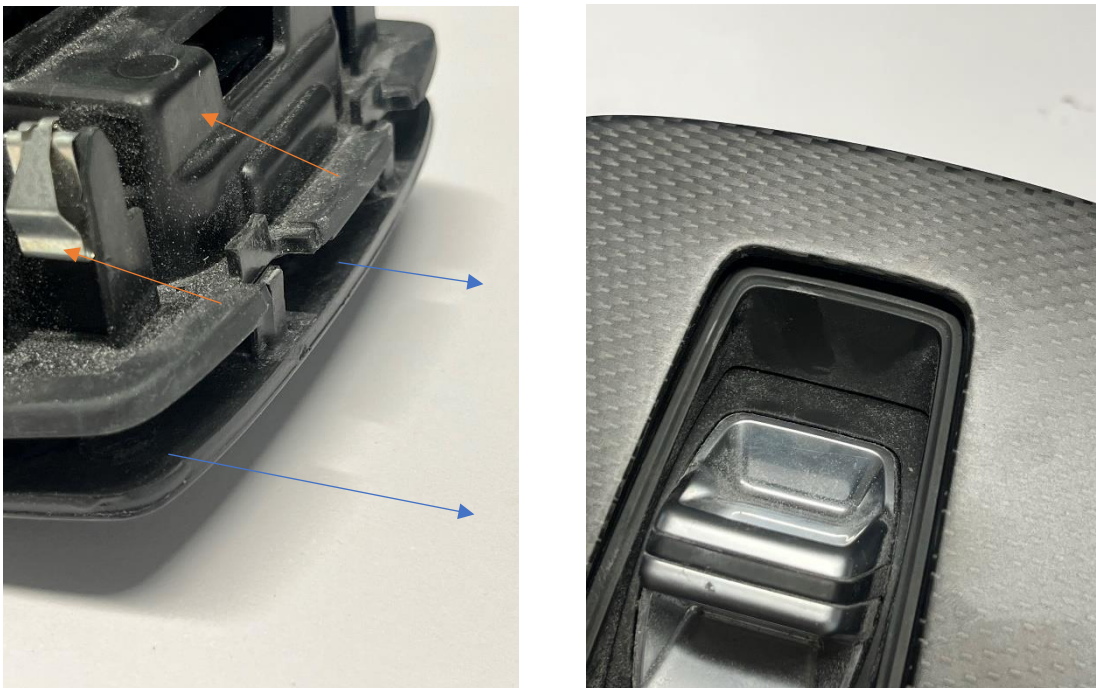
5. Remove the back half and transfer the buttons and gear lever to the new carbon part.



6. Install the back half. Start off in the front area. You need to wiggle in the backhalf at the media button. As soon as the back half is close to the hooks on the front half, you can slide in the front hooks again. Make sure to FIRST slide them in in the front area, do NOT apply unnecessary force, it should go easy.



7. Now only the lower hooks are missing. Align the front and back half so that the hooks get very slight tension. Now shift the parts as shown in the picture below to give the clips more room to snap into place. You can also use slight force on the clips directly with your fingers, be careful. Reinstall the Torx Screws.



8. Finished Part

